

EDENDALE DEER

20th ANNUAL WAPITI TERMINAL SIRE SALE

2:30PM Monday 8 January 2023



EDENDALE STATION

1573 Ashburton Gorge Road, Mt Somers, Ashburton



www.whytefarming.com

Unable to make the sale?

Buy online on bidr® in 3 easy steps:

1

Sign up at **bidr.co.nz** and add your agency account under account details.

2

Browse auctions to find livestock you are interested in buying.

3

Login and register for the real time online auction to bid for the livestock you wish to purchase.

Our partner agencies:



Why use bidr®?

- Free to sign up
- Nationwide reach
- Bid from anywhere
- View auctions and sales results
- Pay for your purchases through your livestock agency account

Contact your bidr® Representative to sign up at **bidr.co.nz**

0800 TO BIDR



fb.com/bidrnz
instagram.com/bidrnz

Welcome to our 20th annual terminal sire sale.

We are excited to welcome you back to Edendale Deer in 2024.

We pride ourselves on our consistency and constitution of our bulls. These young sires are bred initially for our own use, to provide the 1500+ venison weaners we finish each year. They have wintered for two years in their age group mobs. This years mob came through on swedes and silage, and then were drafted from their main group in mid-December after velvetting.

Once again, we are making available a line of sires from another system. We select the top growth rate stags from our 1500 finishing deer, using the weights from weaning until the start of the chill trade.

We sort through these, then using the top performers ourselves as spikers and again at two years old and now the best of these are available today in the sale. They have no recorded sire/dam information, but have the constitution, conformation and recorded growth to breed our venison for the chill trade.

In 2023, we are proud to present a selection of our 3-year old and 4-year old Wapiti Terminal Sires. These have all been Paralisa tested Johnes negative on 13/12/2023 and all have a C10 TB status.

This year there will be an on-farm hybrid sale run with the help of by PGG Wrightson and hosted by bidr, so if you are unable to make it, join us online and bid in real time remotely.

To ensure your new animals arrive safely, we will be organising all transport of sale sires through Downlands Deer.

Should you have any questions or would like to organise a viewing, please do not hesitate to contact us.

Kind regards,

Whyte Farming Co.

Glen Whyte

027 4841841

glen@whytefarming.com

Donald Whyte

(03) 3039842

whytefarming@gmail.com



Maximise your opportunities with a new sire

For new deer farmers, or those who have purchased a sire from us, we offer a few suggestions or general comments that may assist in a successful mating and maximum return on your investment. Good animals are worth looking after!

Relocation – as deer have strong social structures in their groups, there will be a degree of stress in taking young stags from their mobs and comfort zone and transporting them to a new environment. This can be minimised with understanding and common sense. Ideally, if an animal is transported with a familiar stag from his home, he will shift more easily. Sounds like a ploy to increase sales, but multiple animals certainly settle more quickly.

If you shift a single animal, relocate them to a small group of preferably lesser aged males ie. Spikers or two year olds. Failing that, a quiet mob of hinds and fawns is often available for that introductory period. A paddock where the sire can settle under trees or at least far away from major vehicle disturbance is ideal. Our animals run in large groups, quite extensively, so may take a week or two to settle to an urban environment.

Some young elk and Wapiti sires can be intimidated and dominated by smaller but more aggressive older red stags, even in adjoining paddocks, so mating or locating them away from older sires often works best. If you multiple mate your sires, we find it is desirable to match stags of equal age or size so that one doesn't dominate for more than one cycle.

After the rut in early May our policy with removing Wapiti type sires is to run them into the shed and administer a drench whether they look under parasite stress or not. Recent research by the Elk Wapiti Society of New Zealand and Invermay has shown drench resistance in some worms, particularly *Ostertagia*, to moxidectin chemicals. Injectable products have a greater efficacy, but do not be compliant with your parasite management in deer. Seek advice if you are unsure.

As with other deer species, elk and Wapiti can suffer from low trace element levels that may not affect sheep and cattle, such as copper, cobalt, zinc and selenium. Regular soil or animal testing and remedial supplement is important.

Some bloodlines of deer show greater susceptibility to grass staggers. Prevalence of higher endophyte levels in late summer and autumn prior to the rut can ruin your mating program.

Feed your sires extra in that early winter period before the real cold sets in, as recovered energy and body mass will assist the worn out stag to recover for velvet growth and the next mating.



Conditions of sale

1. Sale will be conducted by PGG Wrightson with the conditions of the sale as set down by the Stock and Stations Agents Association, a copy of which is exhibited in the office on sale day.
2. Each lot shall become the property and responsibility of the purchaser at the fall of the hammer.
3. Terms are strictly cash unless prior arrangements have been made with Whyte Farming Company.
4. Sale will be conducted GST exclusive.
5. Intending purchasers are required to register with the auctioneers prior to the commencement of the sale.
6. A buyers commission of 4% is payable to recognised independent agents introducing and accompanying purchasers to the sale prior to commencement of sale.
7. Whyte Farming Co. will assist with transport of sale stock through Downlands Deer. The purchaser must give delivery instructions to the Whyte Farming Team on the day of the sale, using the delivery sheet in the back of this catalogue.

Disclaimer

Purchasers, advisors and all other persons viewing or dealing with the stock must make their own assessment and judgement on the stock and information in this catalogue.

Although every care has been taken in ensuring the accuracy of the information in the catalogue, no responsibility is accepted for any errors that made be included therein.

This sale will be hosted by bidr® (bidr.co.nz) as a HYBRID ON-FARM auction, with online bidding and a live-stream available for online purchasers.

All intending online purchasers must register with bidr® using an account held with one of the bidr® partner agencies in advance of the sale date.

The bidr® team is available to assist intending purchasers with signing up and registering - please call 0800 TO BIDR (0800 86 2437), or email enquiries@bidr.co.nz for assistance at any point.

Alternatively, contact your local bidr® representative:

UPPER NORTH ISLAND

Bruno Santos
027 221 8276

UPPER SOUTH ISLAND

McKenzie Alfeld
027 341 8066

LOWER NORTH ISLAND

Aimee Flynn
027 282 1710

LOWER SOUTH ISLAND

Sam Murphy
027 243 2736

SALES COORDINATOR

Olivia Manley
027 348 6354

Sires



Isobar G246/12

Tikana bull, Storm son, 18kgs EWS birth year ADG 450g

George G386/13

Tikana bull, Nepia son, 20kgs EWS birth year ADG 425g

G513/15

Tikana bull, Nepia son, 12kgs EWS birth year ADG 390g

Shine G551/15

Tikana bull, Isobar son, 17kgs EWS birth year ADG 485g

WY0850/10

Purpose breed Edendale terminal sire, out of a Barber bull

YY7215/17

Dual purpose bull, high growth rate, 17.45 kgs EWS birth year ADG 506g

YG0439/15

Edendale breed dual purpose bull, 18kgs EWS

WG0853/12

Edendale breed elk bull 450 IOA

Commercial bulls

Purpose breed, high growth rate bulls that we have selected for constitution and size that we use to produce our 1500 venison weaners each year



Edendale Deer Terminal Sires 2024					3 yr old	4 yr old		
LOT	Tag	Sire	Birth to weaning ADG	Birth year ADG	Weaning weight 1st march	12mth	36mth	48mth
1	GG0875/20	G249/12 Isobar	801g	561g	89.5	220	328	
2	GG7945/20	WG0853/12	913g	547g	100	215	312	
3	YBK0907/19	Commercial bull	810g	542g	92	213	333	386
4	YBK0911/19	Commercial bull	826g	509g	93.5	201	305	342
5	GG0959/20	WY850	763g	531g	86	209	310	
6	GG7956/20	Commercial bull	758g	458g	85.5	182.5	310	
7	GG7968/20	Commercial bull	655g	435g	76	174	310	
8	GG0821/20	YY7215/17	763g	531g	86	209	307	
9	YBK0734/19	551/15 Shine	389g	419g	76.5	168	301	339
10	YBK0721/19	551/15 Shine	645g	464g	117	184	306	338
11	YBK0699/19	WY850	544g	443g	101	177	290	332
12	YBK0909/19	Commercial bull	736g	517g	85	204	283	325
13	GG7947/20	Commercial bull	840g	506g	94.6	200	307	
14	GG7970/20	Commercial bull	731g	476g	83	189	302	
15	GG7961/20	Commercial bull	737g	461g	80.6	182.5	300	
16	GG0986/20	WY850	903g	526g	99	207	295	
17	GG0919/20	G513/15	795g	502g	89	198.5	294	
18	GG7944/20	Commercial bull	750g	449g	85	179	290	
19	YBK0914/19	Commercial bull	778g	482g	89	191	301	325
20	YBK0696/19	WY850	582g	502g	107	198	289	323
21	YBK0930/19	Commercial bull	926g	487g	100	190	287	319
22	YBK0947/19	Commercial bull	705g	482g	82	191	280	315
23	YBK0927/19	Commercial bull	657g	441g	77.5	176	283	313
24	YBK0906/19	Commercial bull	642g	471g.	73	184	268	305
25	GG7967/20	Commercial bull	827g	449g	92	179	290	
26	GG7959/20	Commercial bull	806g	465g	90	185	288	
27	GG0985/20	G513/15	935g	534g	102	210	287	
28	GG7948/20	Commercial bull	740g	449g	84	179	285	
29	GG7951/20	Commercial bull	630g	416g	70.6	164	284	
30	GG0945/20	G513/15	758g	493g	85.5	195	283	
31	GG7946/20	Commercial bull	690g	416g	76.4	164	283	
32	GG7943/20	Commercial bull	790g	427g	88.5	171	282	
33	GG0776/20	YG0439/15	661g	441g	76.5	176	279	
34	GG7957/20	Commercial bull	670g	408g	77.5	164	279	
35	GG7950/20	Commercial bull	715g	441g	81.5	176	278	
36	GG7954/20	Commercial bull	705g	447g	77.6	175.4	278	
37	YBK0929/19	Commercial bull	578g	432g	70	173	264	303
38	YBK0903/19	Commercial bull	757g	468g	87	186	273	301
39	YBK0664/19	368/13 George	490g	457g	93.5	182	270	300
40	YBK0901/19	Commercial bull	626g	449g	74.5	179	279	299
41	YBK0910/19	Commercial bull	615g	452g	73.5	180	265	298

Lot 1: GG0875/20

Sire: Isobar

Weight (kg):	Weaning	89.5
	12 month	220
	36 month	328
	Sale day	

Birth year ADG 561g

3yr velvet circumference (cm) 18/19

3yr velvet Weight (kg): 6.95

**Lot 2: GG7945/20**

Sire: WG0853/12

Weight (kg):	Weaning	100
	12 month	215
	36 month	312
	Sale day	

Birth year ADG 547g

3yr velvet circumference (cm) 17/17

3yr velvet Weight (kg): 4.82

**Lot 3: YBK0907/19**

Sire: Commercial bull

Weight (kg):	Weaning	92
	12 month	213
	36 month	333
	48 month	376
	Sale day	

Birth year ADG 542g

4yr velvet circumference (cm) 18/17

4yr velvet Weight (kg): 5.87



Lot 4: YBK0911/19

Sire: Commercial bull

Weight (kg):	Weaning	93.5
	12 month	201
	36 month	305
	48 month	337
	Sale day	

Birth year ADG 509g

4yr velvet circumference (cm) 20/20

4yr velvet Weight (kg): 9.35

**Lot 5: GG0959/20**

Sire: WY850

Weight (kg):	Weaning	86
	12 month	209
	36 month	310
	Sale day	

Birth year ADG 531g

3yr velvet circumference (cm) 17/17

3yr velvet Weight (kg): 6.38

**Lot 6: GG7956/20**

Sire: Commercial bull

Weight (kg):	Weaning	85.5
	12 month	182.5
	36 month	310
	Sale day	

Birth year ADG 458g

3yr velvet circumference (cm) 18/17

3yr velvet Weight (kg): 5.01



Lot 7: GG7968/20

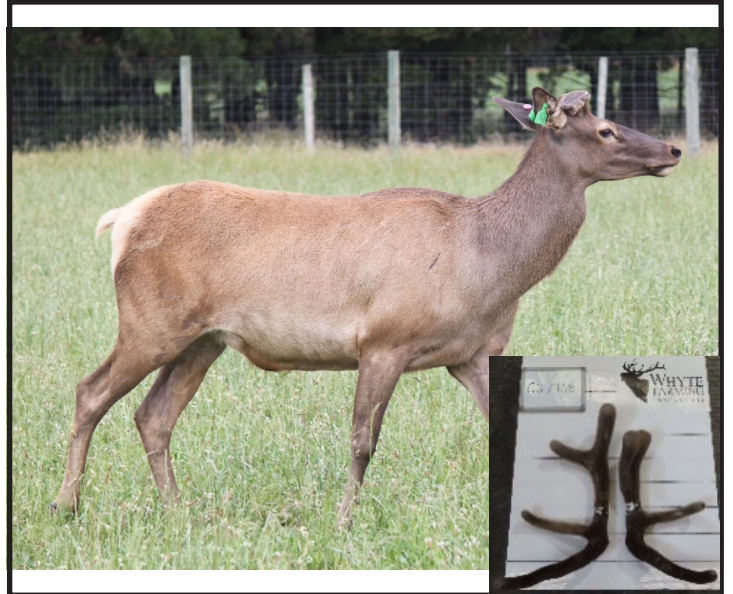
Sire: Commercial bull

Weight (kg):	Weaning	76
	12 month	174
	36 month	310
	Sale day	

Birth year ADG 435g

3yr velvet circumference (cm) 17/18

3yr velvet Weight (kg): 5.49

**Lot 8: GG0821/20**

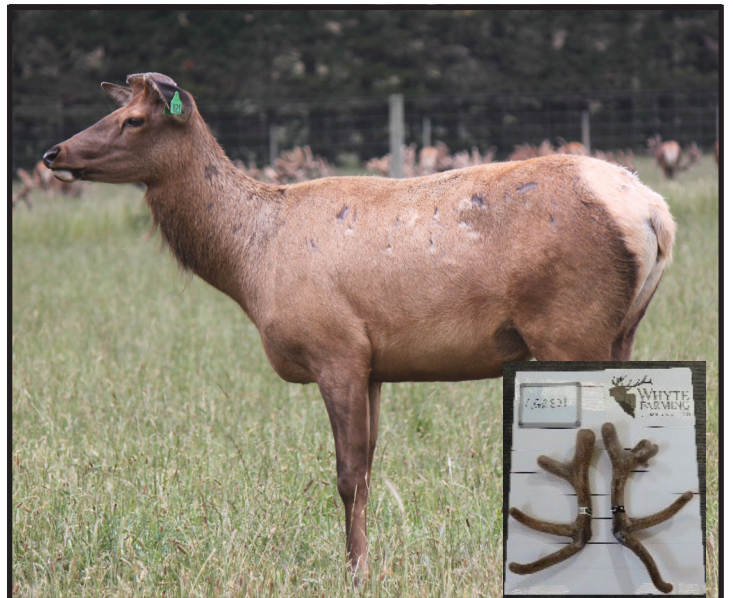
Sire: YY7215/17

Weight (kg):	Weaning	86
	12 month	209
	36 month	307
	Sale day	

Birth year ADG 531g

3yr velvet circumference (cm) 18/18

3yr velvet Weight (kg): 5.5

**Lot 9: YBK0734/19**

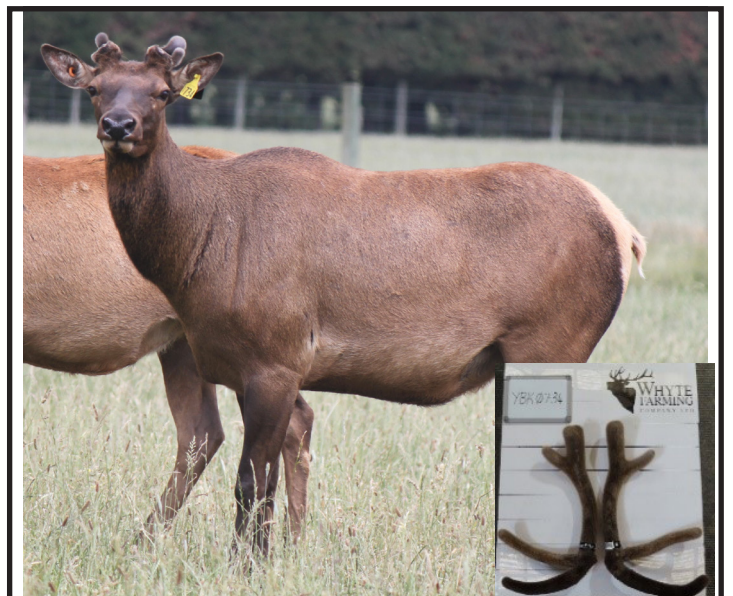
Sire: Shine

Weight (kg):	Weaning	76.5
	12 month	168
	36 month	310
	48 month	339
	Sale day	

Birth year ADG 419g

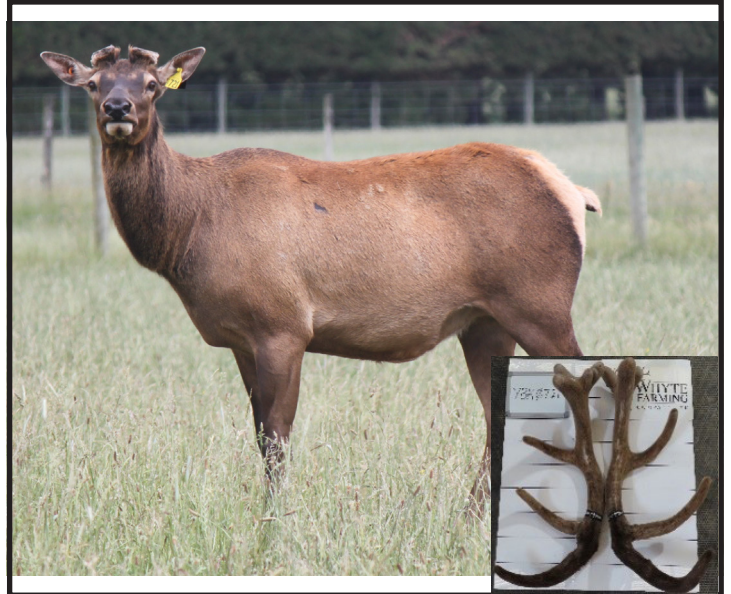
4yr velvet circumference (cm) 17/17

4yr velvet Weight (kg): 5.1

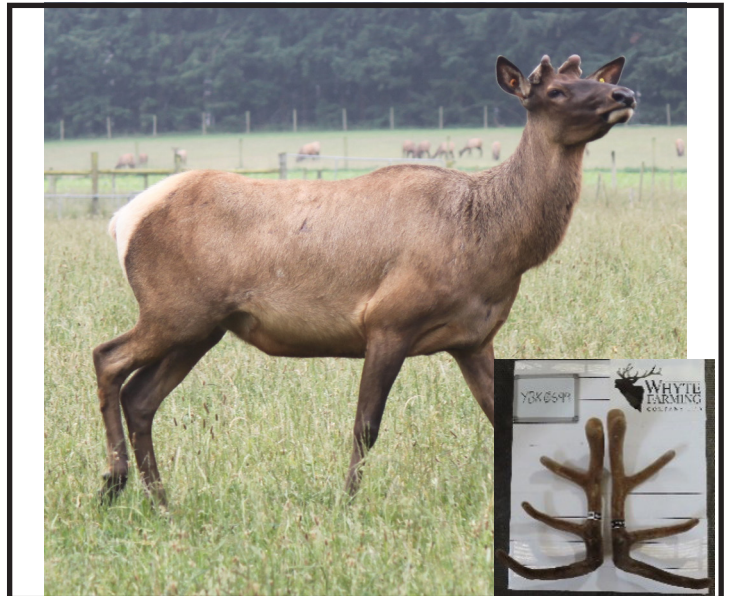


Lot 10: YBK0721/19

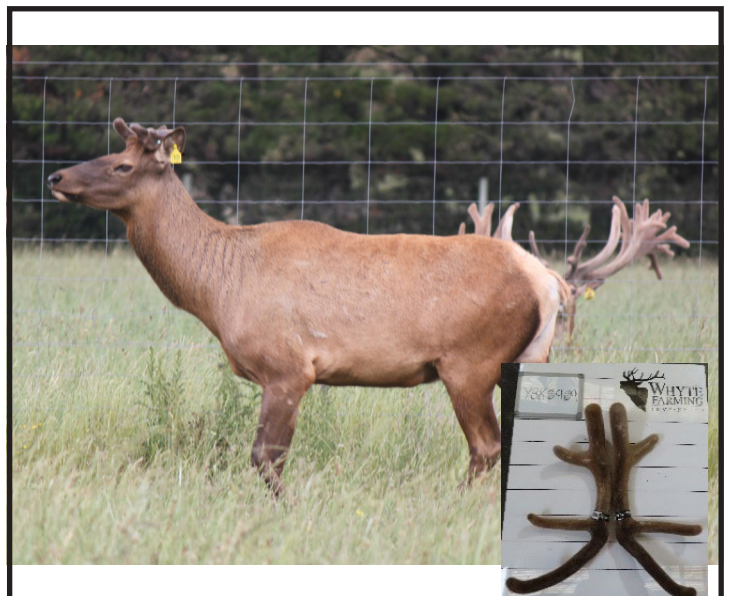
Sire: Shine		
Weight (kg):	Weaning	117
	12 month	184
	36 month	306
	48 month	334
	Sale day	
Birth year ADG		464g
4yr velvet circumference (cm)		20/21
4yr velvet Weight (kg):		10.91

**Lot 11: YBK0699/19**

Sire: WY850		
Weight (kg):	Weaning	101
	12 month	177
	36 month	300
	48 month	322
	Sale day	
Birth year ADG		443
4yr velvet circumference (cm)		16/16
4yr velvet Weight (kg):		5.26

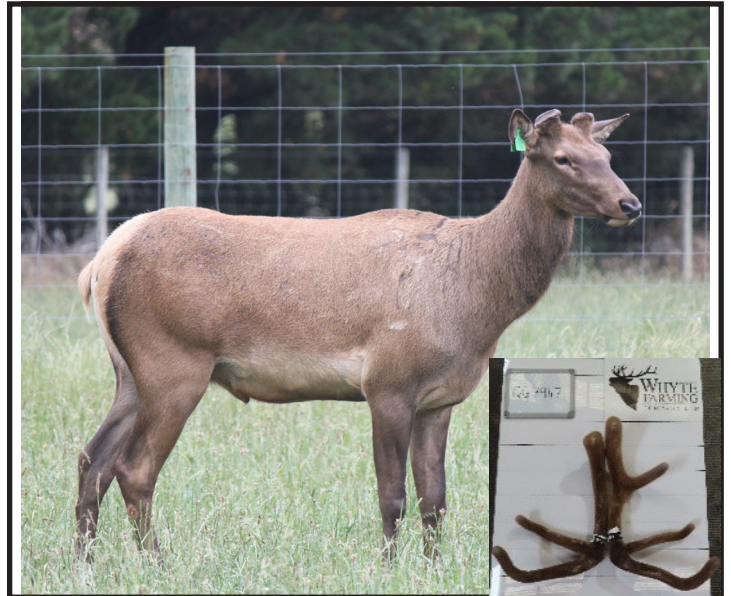
**Lot 12: YBK0909/19**

Sire: Commercial bull		
Weight (kg):	Weaning	85
	12 month	204
	36 month	283
	48 month	318
	Sale day	
Birth year ADG		517g
4yr velvet circumference (cm)		17/18
4yr velvet Weight (kg):		4.72



Lot 13: GG7947/20

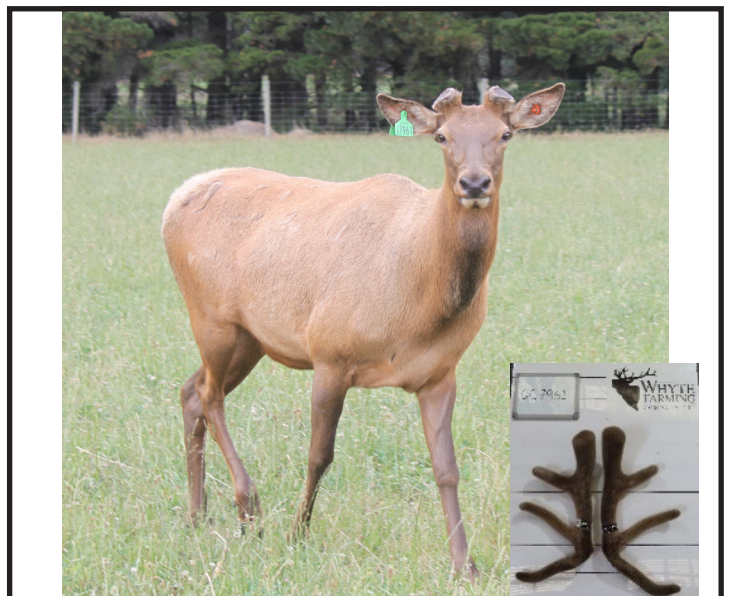
Sire: Commercial bull		
Weight (kg):	Weaning	94.6
	12 month	200
	36 month	307
	Sale day	
Birth year ADG		506g
3yr velvet circumference (cm)		16/17
3yr velvet Weight (kg):		3.73

**Lot 14: GG7970/20**

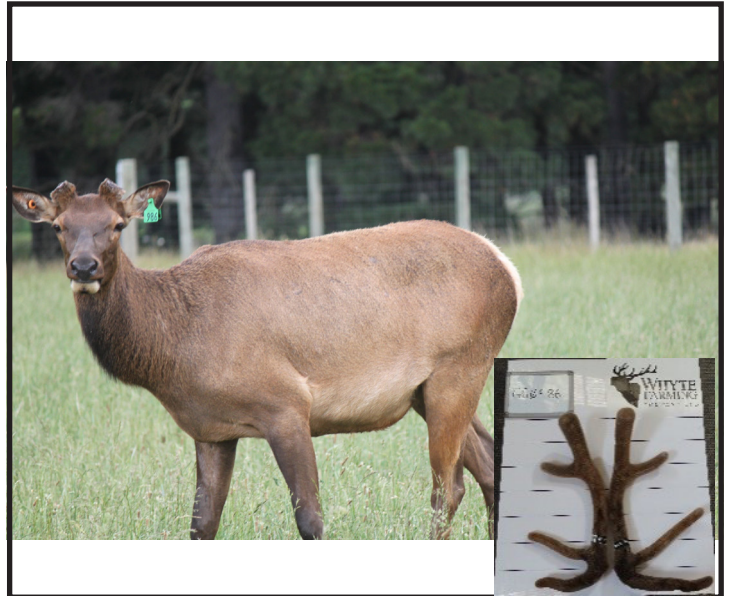
Sire: Commercial bull		
Weight (kg):	Weaning	83
	12 month	189
	36 month	302
	Sale day	
Birth year ADG		476g
3yr velvet circumference (cm)		15/18
3yr velvet Weight (kg):		3.99

**Lot 15: GG7961/20**

Sire: Commercial bull		
Weight (kg):	Weaning	80.6
	12 month	182.5
	36 month	300
	Sale day	
Birth year ADG		461g
3yr velvet circumference (cm)		18/20
3yr velvet Weight (kg):		4.85



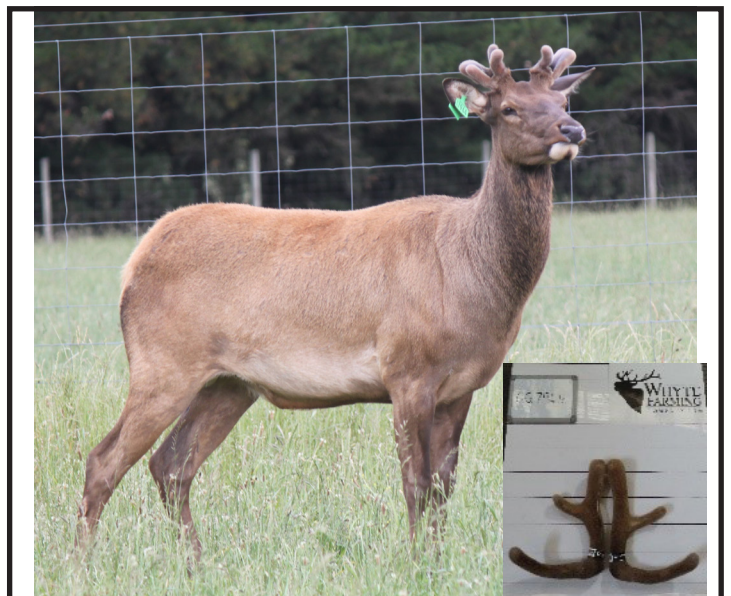
Lot 16: GG0986/20		
Sire: WY850		
Weight (kg):	Weaning	99
	12 month	207
	36 month	295
	Sale day	
Birth year ADG		526g
3yr velvet circumference (cm)		16/17
3yr velvet Weight (kg):		4.8



Lot 17: GG0919/20		
Sire: G513/15		
Weight (kg):	Weaning	89
	12 month	198.5
	36 month	294
	Sale day	
Birth year ADG		502g
3yr velvet circumference (cm)		17/18
3yr velvet Weight (kg):		5.17

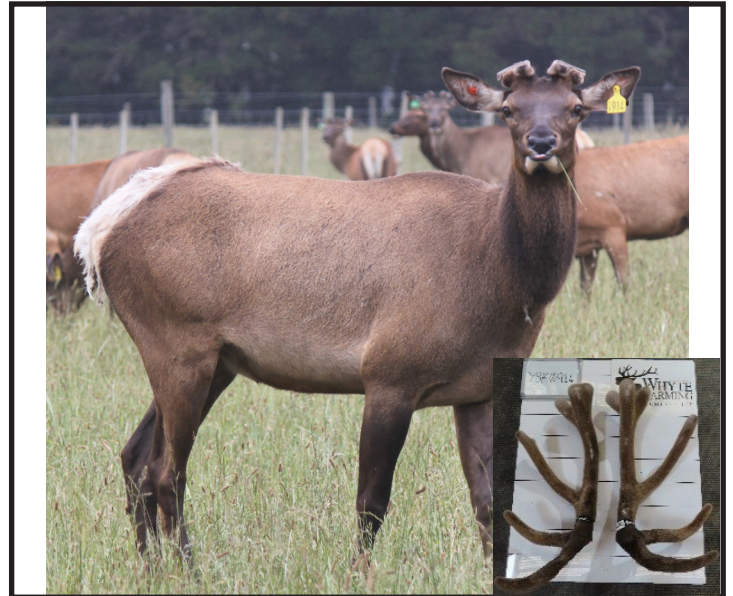


Lot 18: GG7944/20		
Sire: Commercial bull		
Weight (kg):	Weaning	85
	12 month	179
	36 month	290
	Sale day	
Birth year ADG		449g
3yr velvet circumference (cm)		16/16
3yr velvet Weight (kg):		3.06

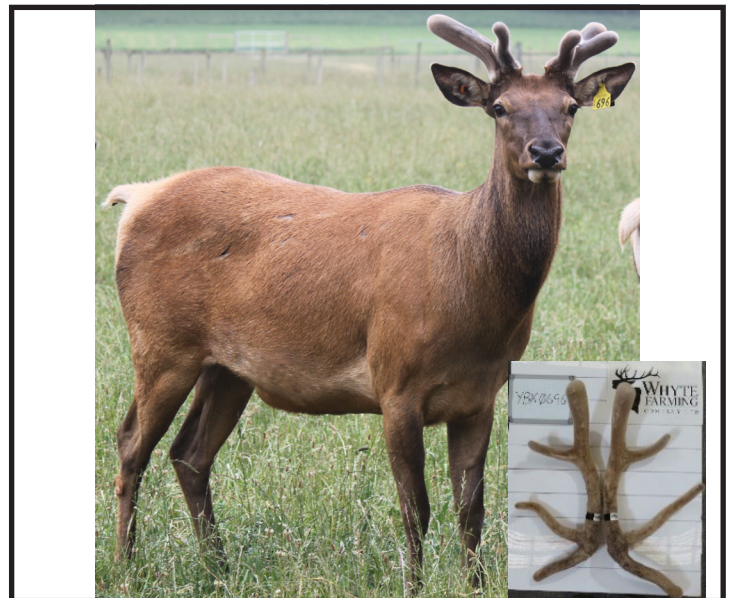


Lot 19: YBK0914/19

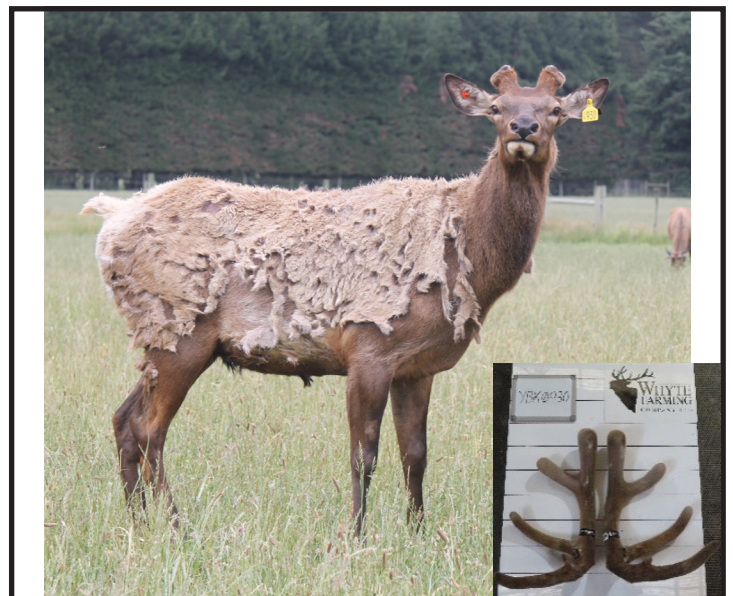
Sire: Commercial bull		
Weight (kg):	Weaning	89
	12 month	191
	36 month	301
	48 month	321
	Sale day	
Birth year ADG		482g
4yr velvet circumference (cm)		21/20
4yr velvet Weight (kg):		8.84

**Lot 20: YBK0696/19**

Sire: WY850		
Weight (kg):	Weaning	107
	12 month	198
	36 month	289
	48 month	318
	Sale day	
Birth year ADG		502g
4yr velvet circumference (cm)		17/17
4yr velvet Weight (kg):		6.19

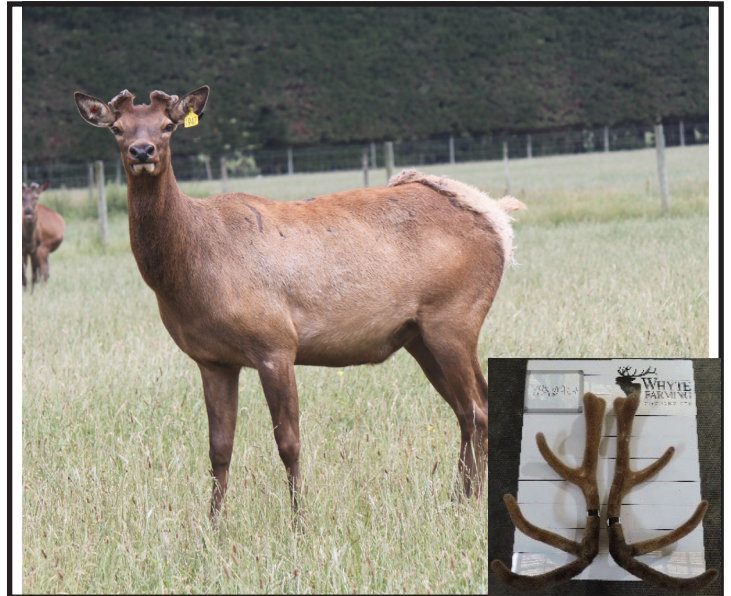
**Lot 21: YBK0930/19**

Sire: Commercial bull		
Weight (kg):	Weaning	100
	12 month	190
	36 month	287
	48 month	321
	Sale day	
Birth year ADG		487g
4yr velvet circumference (cm)		19/20
4yr velvet Weight (kg):		6.89

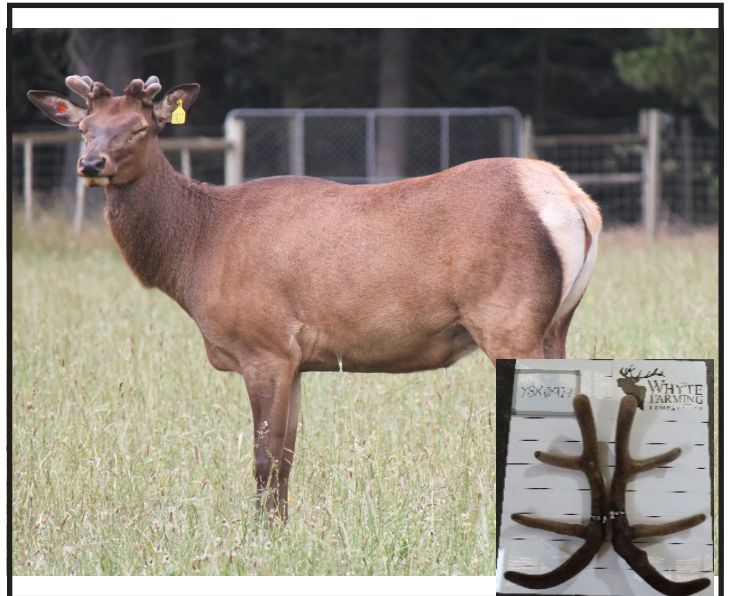


Lot 22: YBK0947/19

Sire: Commercial bull		
Weight (kg):	Weaning	82
	12 month	191
	36 month	280
	48 month	316
	Sale day	
Birth year ADG		482g
4yr velvet circumference (cm)		18/19
4yr velvet Weight (kg):		7.56

**Lot 23: YBK0927/19**

Sire: Commercial bull		
Weight (kg):	Weaning	77.5
	12 month	176
	36 month	283
	48 month	311
	Sale day	
Birth year ADG		441g
4yr velvet circumference (cm)		17/16
4yr velvet Weight (kg):		5.2

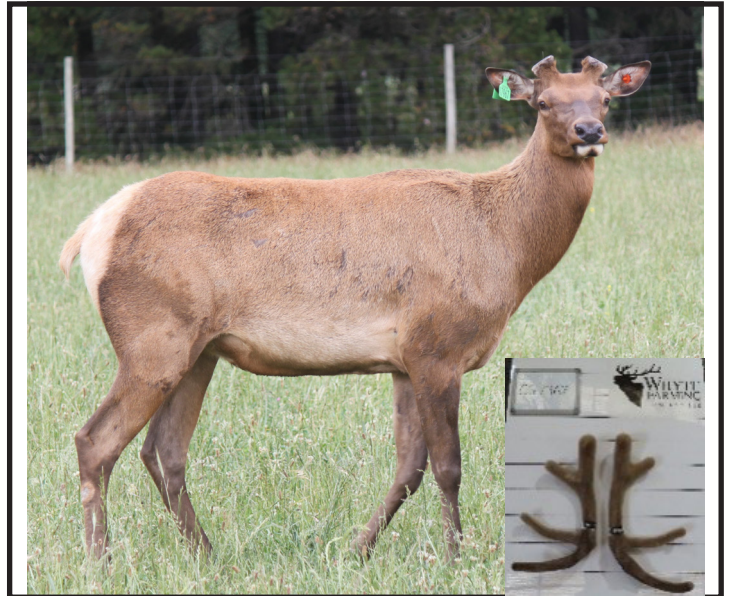
**Lot 24: YBK0906/19**

Sire: Commercial bull		
Weight (kg):	Weaning	73
	12 month	184
	36 month	268
	48 month	302
	Sale day	
Birth year ADG		471g
4yr velvet circumference (cm)		18/18
4yr velvet Weight (kg):		6.35



Lot 25: GG7967/20

Sire: Commercial bull		
Weight (kg):	Weaning	92
	12 month	179
	36 month	290
	Sale day	
Birth year ADG		449g
3yr velvet circumference (cm)		16/18
3yr velvet Weight (kg):		3.7

**Lot 26: GG7959/20**

Sire: Commercial bull		
Weight (kg):	Weaning	90
	12 month	185
	36 month	288
	Sale day	
Birth year ADG		465g
3yr velvet circumference (cm)		17/19
3yr velvet Weight (kg):		4.91

**Lot 27: GG0985/20**

Sire: G513/15		
Weight (kg):	Weaning	102
	12 month	210
	36 month	287
	Sale day	
Birth year ADG		534g
3yr velvet circumference (cm)		19/19
3yr velvet Weight (kg):		7.34



Lot 28: GG7948/20

Sire: Commercial bull

Weight (kg):	Weaning	84
	12 month	179
	36 month	285
	Sale day	

Birth year ADG 449g

3yr velvet circumference (cm) 18/19

3yr velvet Weight (kg): 5.01

**Lot 29: GG7951/20**

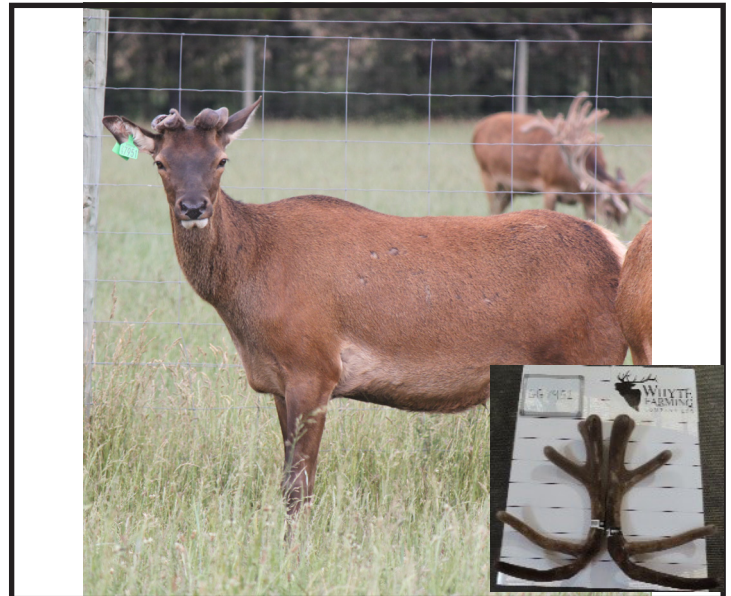
Sire: Commercial bull

Weight (kg):	Weaning	70.6
	12 month	164
	36 month	284
	Sale day	

Birth year ADG 416g

3yr velvet circumference (cm) 19/20

3yr velvet Weight (kg): 6.6

**Lot 30: GG0945/20**

Sire: G513/15

Weight (kg):	Weaning	85.5
	12 month	195
	36 month	283
	Sale day	

Birth year ADG 493g

3yr velvet circumference (cm) 18/20

3yr velvet Weight (kg): 7.24



Lot 31: GG7946/20

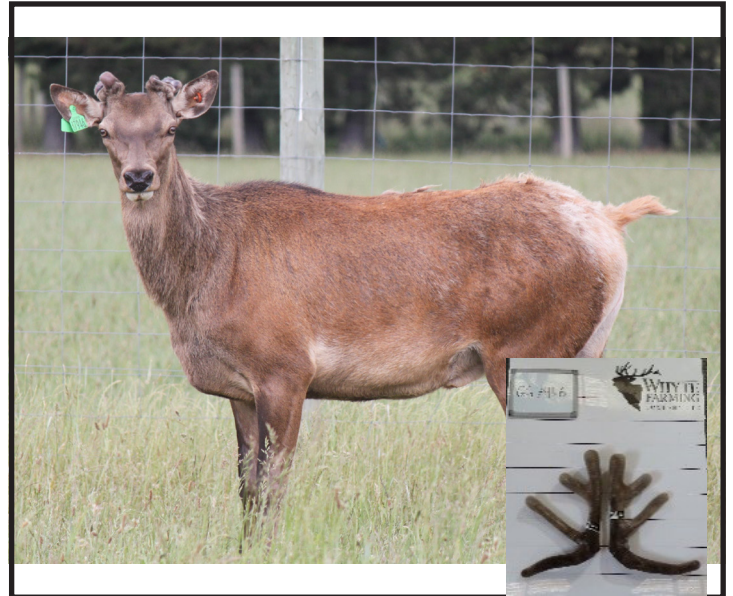
Sire: Commercial bull

Weight (kg):	Weaning	76.4
	12 month	164
	36 month	283
	Sale day	

Birth year ADG 416g

3yr velvet circumference (cm) 15/16

3yr velvet Weight (kg): 3.45

**Lot 32: GG7943/20**

Sire: Commercial bull

Weight (kg):	Weaning	88.5
	12 month	171
	36 month	282
	Sale day	

Birth year ADG 427g

3yr velvet circumference (cm) 17/18

3yr velvet Weight (kg): 5.74

**Lot 33: GG0776/20**

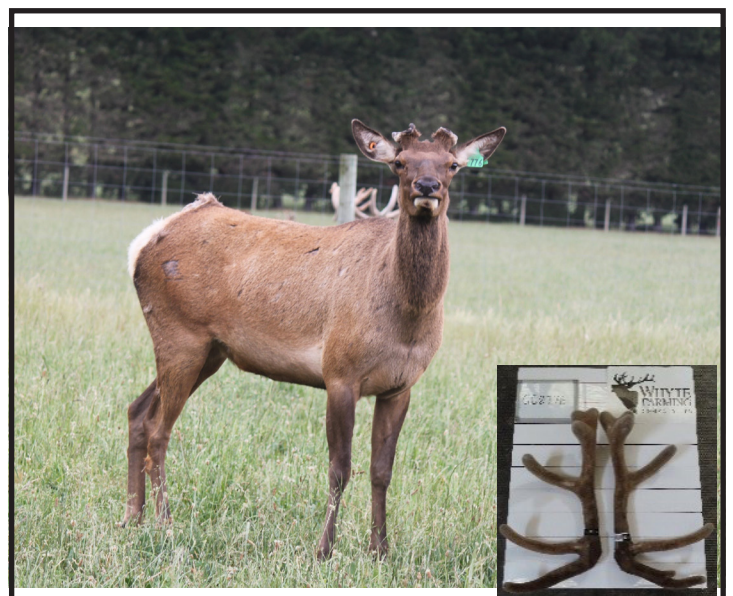
Sire: YG0439/15

Weight (kg):	Weaning	76.5
	12 month	176
	36 month	279
	Sale day	

Birth year ADG 441g

3yr velvet circumference (cm) 19/19

3yr velvet Weight (kg): 8.17



Lot 34: GG7957/20

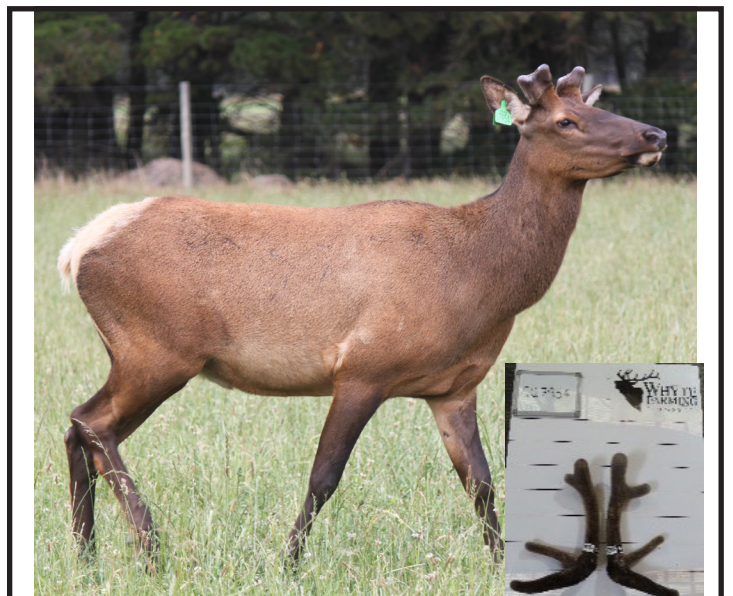
Sire: Commercial bull		
Weight (kg):	Weaning	77.5
	12 month	164
	36 month	279
	Sale day	
Birth year ADG		408g
3yr velvet circumference (cm)		18/18
3yr velvet Weight (kg):		5.77

**Lot 35: GG7950/20**

Sire: Commercial bull		
Weight (kg):	Weaning	81.5
	12 month	176
	36 month	278
	Sale day	
Birth year ADG		441g
3yr velvet circumference (cm)		17/17
3yr velvet Weight (kg):		4.31

**Lot 36: GG7954/20**

Sire: Commercial bull		
Weight (kg):	Weaning	77.6
	12 month	175.4
	36 month	278
	Sale day	
Birth year ADG		449g
3yr velvet circumference (cm)		16/16
3yr velvet Weight (kg):		3.13



Lot 37: YBK0929/19

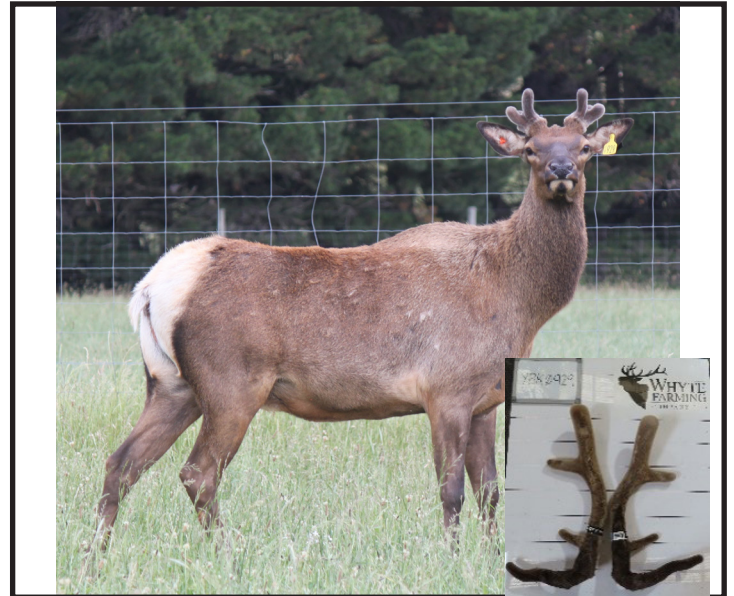
Sire: Commercial bull

Weight (kg):	Weaning	70
	12 month	173
	36 month	264
	48 month	298
	Sale day	

Birth year ADG 432g

4yr velvet circumference (cm) 17/18

4yr velvet Weight (kg): 4.69

**Lot 38: YBK0903/19**

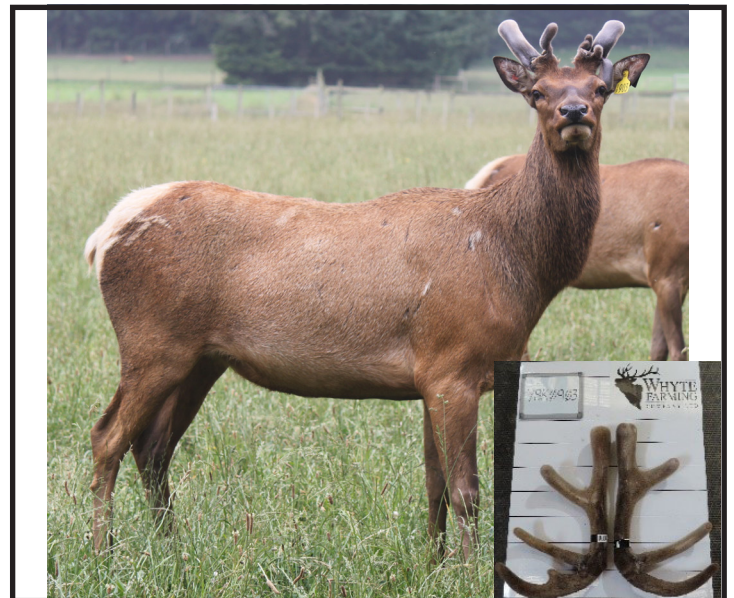
Sire: Commercial bull

Weight (kg):	Weaning	87
	12 month	186
	36 month	273
	48 month	302
	Sale day	

Birth year ADG 468g

4yr velvet circumference (cm) 20/20

4yr velvet Weight (kg): 7.53

**Lot 39: YBK0664/19**

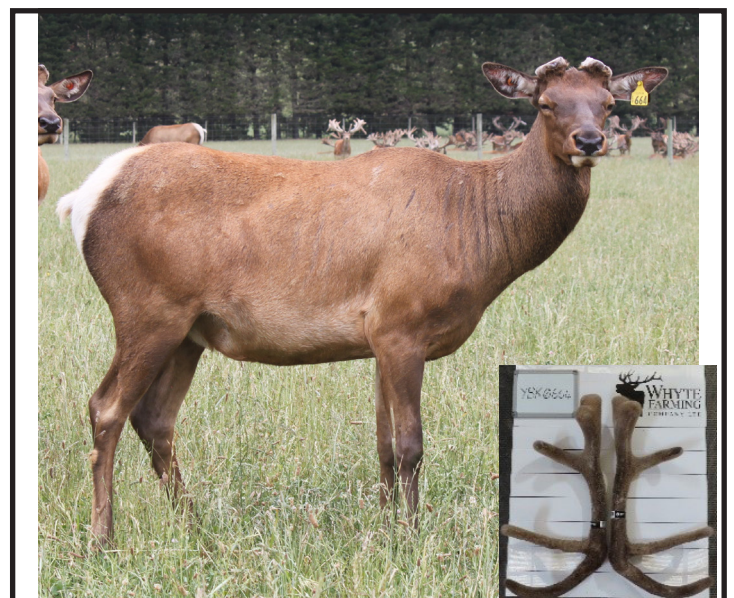
Sire: George

Weight (kg):	Weaning	93.5
	12 month	182
	36 month	270
	48 month	300
	Sale day	

Birth year ADG 457g

4yr velvet circumference (cm) 20/21

4yr velvet Weight (kg): 9.25



Lot 40: YBK0901/19

Sire: Commercial bull

Weight (kg):	Weaning	74.5
	12 month	179
	36 month	279
	48 month	294
	Sale day	

Birth year ADG 449g

4yr velvet circumference (cm) 17/17

4yr velvet Weight (kg): 4.59

**Lot 41: YBK0910/19**

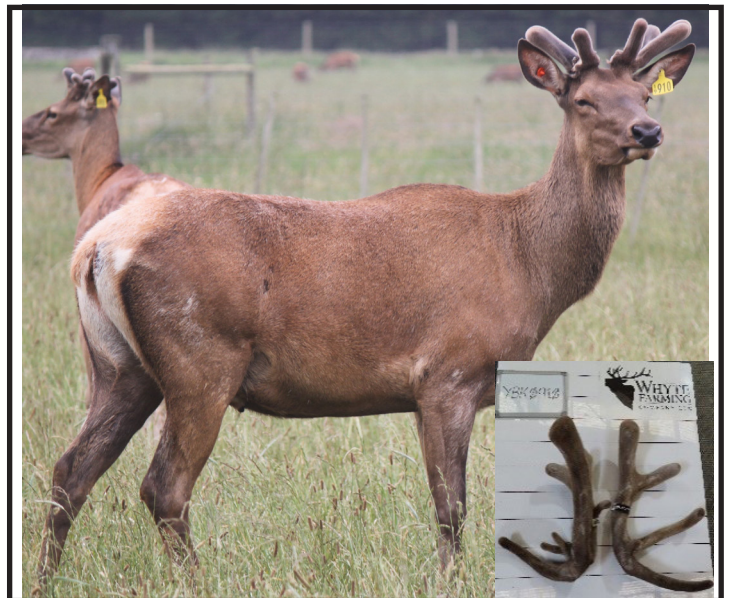
Sire: Commercial bull

Weight (kg):	Weaning	73.5
	12 month	180
	36 month	265
	48 month	298
	Sale day	

Birth year ADG 452g

4yr velvet circumference (cm) 18/18

4yr velvet Weight (kg): 5.97



EDENDALE DEER



BUYERS DELIVERY INSTRUCTION SLIP
(no verbal instructions can be accepted)

Name _____

Address _____

Lots purchased _____

Total number _____

Consign to _____

Account to _____

Delivered to _____

Signature of purchaser _____

Thank you for attending our 20th annual Edendale Deer Wapiti Terminal Sire
Sale

Servicing all aspects of the deer industry.

Contact your local Deer Specialist.

Steve Annan

North Island
Deer & Velvet Coordinator
027 215 6671
steven.annan@pggwrightson.co.nz

Ron Schroeder

Central & North Canterbury,
Marlborough, West Coast
0274 321 299
rschroeder@pggwrightson.co.nz

Graham Kinsman

NZ Deer Stud Coordinator
0274 223 154
gkinsman@pggwrightson.co.nz

Murray Coutts

Mid & South Canterbury
0274 039 377
mcoutts@pggwrightson.co.nz

Luke Thompson

Central & North Canterbury,
Marlborough & West Coast
0273 083 426
luke.thompson@pggwrightson.co.nz

John Williams

Otago
0272 414 179
jwilliams@pggwrightson.co.nz

Ben Beadle

Southland
0277 281 052
bbeadle@pggwrightson.co.nz



**SCAN ME
to find a rep**